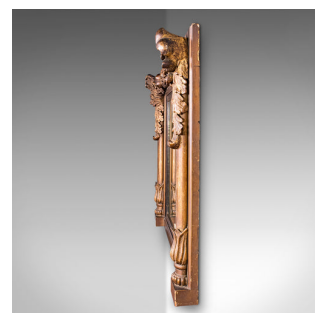


Antique Regency Overmantle Mirror, English, Giltwood, Neoclassical, Circa 1820



DESCRIPTION

Our Stock # 25942

This is an antique overmantle mirror. An English, giltwood and gesso pier mirror, dating to the Regency period, circa 1820.

- Superb country house appeal, with a refined appearance
- Displays a desirable aged patina and in good original order
- Rich golden hues grace the prominent giltwood frame
- Appealing aged mirror plate with a desirable foxing commensurate with age
- Gesso relief in Neoclassical taste, with striking leaf and scroll forms
- Acanthus bulbs adorn the lower pilasters with Italianate effect
- Bezel presents a tiered ebonised finish, framing the mirror plate
- Dressed to the rear with a pair of mounting loops for ease of hanging

This is an attractive antique overmantle mirror, with a wonderful Italianate aesthetic typical of the period. Refined, authentic elegance with a timeless appeal. Delivered ready to display.

Search [London Fine for #25942](#) , or scan the QR code for more photos and details

DIMENSIONS

- Max Width: 92cm (36.25")
- Max Depth: 8.5cm (3.25")
- Max Height: 58.5cm (23")
- Mirror Plate Width: 70cm (27.5")
- Mirror Plate Height: 40.5cm (16")

LIST PRICE

£1,495.00

