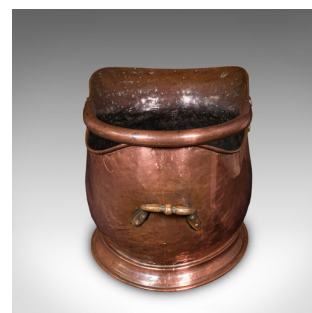
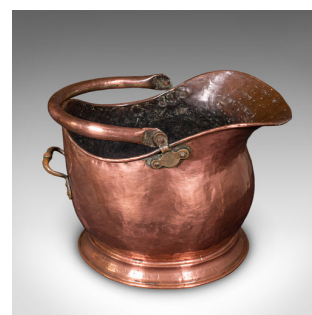
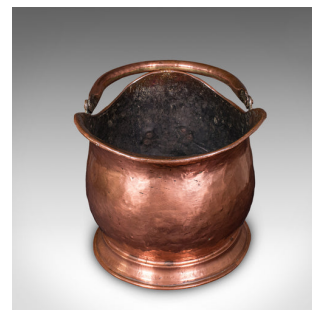


Antique Helmet Coal Scuttle, English, Copper, Fireplace Fuel Keeper, Victorian



DESCRIPTION

Our Stock # 25842

This is an antique helmet coal scuttle. An English, copper fireside store or fuel keeper, dating to the early Victorian period, circa 1850.

- Delightfully traditional scuttle with a delightfully traditional form
- Displays a desirable aged patina and in good original order
- Quality copper presents warm amber hues with a light patination
- Gently patinated interior presents well for the age and intended use
- Rolled handle mounted upon tri-form backplates with shaped handle to rear
- Raised upon a concentric foot of gently tapering form with rolled edges
- Suitable for logs, kindling and all other fuel types
- Alternatively, could be a delightfully distinctive waste basket in a home office

This is a charming antique helmet coal scuttle, exhibiting great colour and a traditional hearthside appeal. A treat for the country house cottage fireplace. Delivered ready to display.

Search [London Fine for #25842](#) , or scan the QR code for more photos and details

DIMENSIONS

Max Width: 25cm (9.75")
 Max Depth: 36cm (14.25")
 Max Height: 25cm (9.75")
 Height to Handle: 40cm (15.75")

LIST PRICE

£495.00

