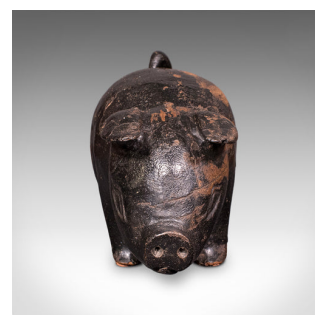


Vintage Carved Piglet Figure, English, Treen, Ebonised, Farmyard, Mid Century



**DESCRIPTION**

Our Stock # 26011

This is a vintage carved piglet figure. An English, ebonised treen in farmyard animal form, dating to the mid 20th century, circa 1950. A charming decorative study, offering rustic character and appealing mid-century naive craftsmanship.

- Endearing example of rustic decorative arts in beloved piglet form
- Displays a desirable aged patina with gentle time-worn character
- Subtle wear commensurate with age and use adds character and authenticity
- Pleasing form with smooth contours enhancing the carved silhouette
- Crafted in the form of a British Lop piglet, with the forward lopped ears
- Ebonised finish presents deep tonality, gentle weathering showing the caramels of pine
- Each foot dressed with protective suede leather cushions
- Stable and well balanced for shelf or tabletop placement within country house or farm interiors

This is a charming mid century piglet figure, graced with enduring appeal and a gently patinated appearance. Delivered ready to display

**DIMENSIONS**

- Max Width: 10cm (4")
- Max Depth: 23cm (9")
- Max Height: 13.5cm (5.25")



Search London Fine for #26011, or scan the QR code for more photos and details.  
+44 (0) 207 1855 511

London Fine Ltd  
The Antique Village  
The Old Whiteways Cider Factory  
Hele, Devon, EX5 4PW

sales@londonfine.co.uk  
E. & O. E.