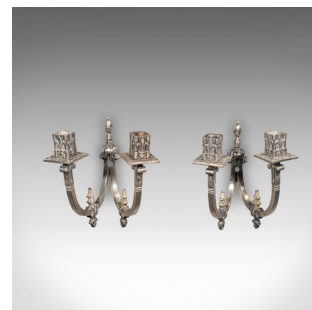


Pair of Antique Candle Sconces, French, Wall Lighting, Art Nouveau, Victorian



DESCRIPTION

Our Stock # 25450

This is a pair of antique candle sconces. A French, silver plated wall light in Art Nouveau taste, dating to the late Victorian period, circa 1900.

- Wonderful turn of the century home lighting, with Francophile interest
- Displaying a desirable aged patina, gently time worn throughout
- Crafted in silver plate with a lightly weathered appearance
- Twin branch form presenting a pair of canted candle nozzles
- French iconography adorns each nozzle with timeless Fleur-de-lys motif
- Fascinating branches ascend on serpentine arms, with finial adornments
- Each nozzle accommodating candles up to three-quarter inch in diameter
- Channels to the nozzle form aids wax collection, for a cleaner lighting solution

This is a charming pair of antique candle sconces, with appealing Art Nouveau taste and French iconography. Delivered ready for the home.

Search [London Fine for #25450](#) , or scan the QR code for more photos and details

DIMENSIONS

- Max Width: 19cm (7.5")
- Max Depth: 16cm (6.25")
- Max Height: 20.5cm (8")
- Nozzle Width: 21mm (0.75")
- Nozzle Depth: 21mm (0.75")

LIST PRICE

£595.00

