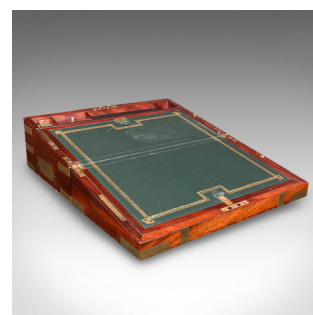


Antique Campaign Writing Slope, English Correspondence Box, Book Rest, Victorian



DESCRIPTION

Our Stock # 25810

This is an antique campaign writing slope. An English, mahogany and brass correspondence box with leather skiver and book rest, dating to the early Victorian period, circa 1840. A refined, dual aspect writing companion of excellent quality and enduring charm.

- Superb example, with metamorphic qualities for the travelling writer and reader
- Displays a desirable aged patina and in good antique order throughout
- Select stocks present fine grain interest with warm caramel hues
 - Lid adorned with unmarked brass shield and inlaid brass straps, lending a distinguished aesthetic
- Brass lock escutcheon to the fascia – untested, key absent
- Opens to reveal a forest green leather skiver, attractively gilt tooled and embossed
- Skiver formed in two parts, each lifting to reveal generous document compartments beneath
 - Nesting within the lower compartment, a removable rest for mounting on the case lid
 - In this form the lid is angled upon a brass ratchet to the interior, ideal for sheet music or reading

DIMENSIONS

- Max Width: 45.5cm (18")
- Max Depth: 26cm (10.25")
- Max Height: 16.5cm (6.5")
- Extended Width: 45.5cm (18")
- Extended Depth: 52.5cm (20.75")
- Extended Height: 13cm (5")

LIST PRICE

£2,350.00

