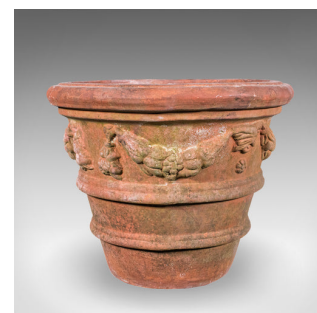
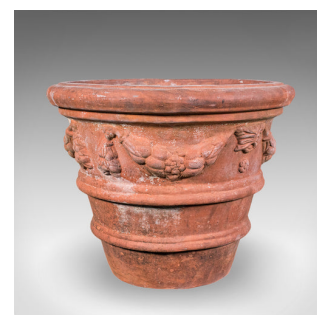
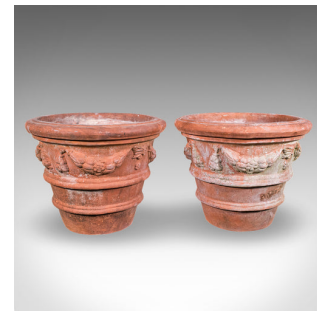


Pair of Vintage Patio Jardiniere, English, Terracotta, Veranda Planter Pot, 1960



DESCRIPTION

Our Stock # 25839

This is a pair of vintage patio jardinière. An English, terracotta veranda planter pot, dating to the mid 20th century, circa 1960. Offering wonderful decorative appeal and fine weathered character, this charming piece would make a superb addition to any veranda, conservatory, or garden terrace.

- Delightful mid century jardinière with timeless classical styling
- A charming planter for displaying flora such as lavender, small conifers or mixed herbs
- Crafted in quality terracotta, presenting warm amber hues and natural weathering
- In original vintage order, displaying gentle age-related patina commensurate with outdoor use

- Broad rolled rim with an opening diameter of 32cm (12.5")
- Relief decorated fascia, featuring sash garlands and foliate motif
- Further embellished with a duo of concentric rolled ridges to the tapering form
- Replete with drain holes to the base, ideal for watering

DIMENSIONS

Max Width: 40cm (15.75")
 Max Depth: 40cm (15.75")
 Max Height: 31.5cm (12.5")
 Opening Diameter: 32cm (12.5")
 Planter Height: 30cm (11.75")

LIST PRICE

£695.00



This is a charming pair of vintage patio jardinière with charming classical detail and traditional garden appeal. Ideal for displaying seasonal blooms or as a standalone decorative piece ready for display.

London Fine Ltd
 The Antique Village
 The Old Whiteways Cider Factory
 Hele, Devon, EX5 4PW

sales@londonfine.co.uk
 E. & O. E.