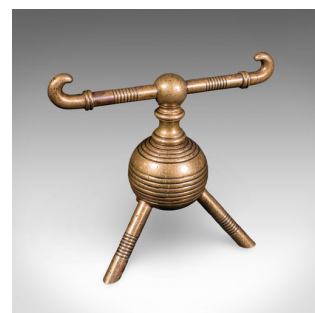


Pair of Antique Fireside Tool Rests, English, Aesthetic Movement, Late Victorian



**DESCRIPTION**

Our Stock # 26068

This is a pair of antique fireside tool rests. An English, brass fire dog in Aesthetic Movement taste by Dr Christopher Dresser, dating to the late Victorian period, circa 1890.

A fascinating pair of petite yet highly distinctive fire dogs, presenting refined geometric form and celebrated late-Victorian design pedigree.

- In the Aesthetic Movement taste of Dr Christopher Dresser
- Displays a desirable aged patina with a gently time-worn appearance
- Fascinating tripod form with striking decorative detail
- Petite proportion, ideal for smaller hearth settings
- Quality brass presents deep golden tonality throughout
- Spherical body adorned with a concentric ring motif
- Dual branch arms extend from each body and finished with rolled hooks to either end
- Standing upon a tripod arrangement of short splayed legs

**DIMENSIONS**

Max Width: 19cm (7.5")  
Max Depth: 11.5cm (4.5")  
Max Height: 17cm (6.75")

**LIST PRICE**

£595.00



Search [London Fine for #26068](#) , or scan the QR code for more photos and details