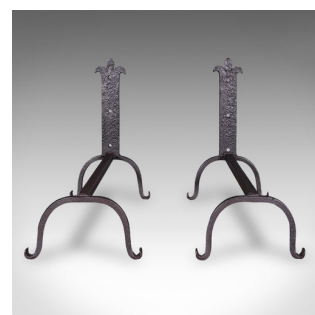




## Pair of Antique Fire Dogs, English, Blacksmith Made, Andirons, Gothic, Edwardian



### DESCRIPTION

Our Stock # 26001

This is a pair of antique fire dogs. An English, blacksmith made wrought iron fireplace andiron with Gothic overtones, dating to the Edwardian period, circa 1905.

- Appealing pair of estate made hearth andirons, with charming Gothic revival taste
- Presenting a desirable aged patina and in good original order
- Quality, hand wrought iron presents a good, consistent graphite finish
- Attractive Fleur-de-lis motif sits atop the front support
- Standing upon distinctive arched front legs and rear legs
- The rear support for placing a small to medium sized grate

This is a charming pair of antique fire dogs, with Gothic influence and ready to be welcomed into any fireside location. Delivered ready for the home.

Search [London Fine for #26001](#) , or scan the QR code for more photos and details

### DIMENSIONS

Max Width: 24cm (9.5")

Max Depth: 48cm (19")

Max Height: 41.5cm (16.25")

### LIST PRICE

£395.00

