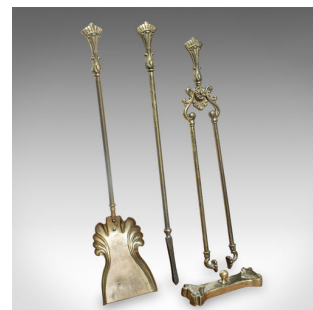


Set of 3 Antique Fireside Tools, English, Tongs, Poker, Art Nouveau, Victorian



DESCRIPTION

Our Stock # 25408

This is a set of 3 antique fireside tools. An English, brass poker, coal shovel and tongs companion set, dating to the Victorian period, circa 1900.

- Striking trio of tools, with attractive Art Nouveau overtones
- Each displays a desirable aged patina throughout, gently time-worn with careful use
- Quality brass presents deep golden tones with a pleasing finish
 - Eye-catching handles take the form of a plume of feathers, with foliate bulb terminus
- Delightful Art Nouveau taste to the tong's hinge and shovel's pan
- Replete with a brass tool rest, with scalloped corners

This is an appealing set of 3 antique fireside tools, graced with Art Nouveau forms and detail. Suitable for all fuel types and an elegant addition to the fireside. Delivered ready to use.

Search [London Fine for #25408](#) , or scan the QR code for more photos and details

DIMENSIONS

- Shovel Width: 15cm (6")
- Shovel Depth: 10cm (4")
- Shovel Height: 70.5cm (27.75")
- Tongs Width: 11.5cm (4.5")
- Tongs Depth: 3.5cm (1.5")
- Tongs Height: 67cm (26.5")
- Poker Width: 6cm (2.25")
- Poker Depth: 3cm (1.25")
- Poker Height: 70.5cm (27.75")

LIST PRICE

£425.00

