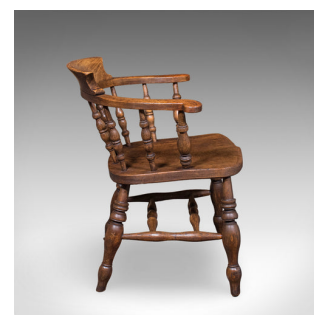


Antique Country House Captain's Chair, English, Smoker's Bow, Edwardian, C.1906



DESCRIPTION

Our Stock # 26128

This is an antique country house captain's chair. An English, beech and elm smoker's bow or elbow seat, dating to the Edwardian period, circa 1906.

- Wonderful country house appeal with the classic bow form
- Displays a desirable aged patina and in good original order
- Select beech and elm stocks show excellent grain interest throughout
- Graced with appealing caramel hues to the delightful form
- The upper rail crowned with a prominent arched and bowed back rest
- Baluster turned spindles rise obliquely supporting the striking horseshoe armrest
- Each arm terminates in out-turned scrolled hand grips
- Comfortable saddle squab being nicely crafted with defined leg scallops
- Standing upon a quartet of stout baluster legs united by double 'H' stretchers

Search [London Fine for #26128](#) , or scan the QR code for more photos and details

DIMENSIONS

- Chair Width: 67.5cm (26.5")
- Chair Depth: 61.5cm (24.25")
- Chair Height: 79cm (31")
- Seat Width: 38cm (15")
- Seat Depth: 44.5cm (17.5")
- Seat Height: 45cm (17.75")

LIST PRICE

£845.00

