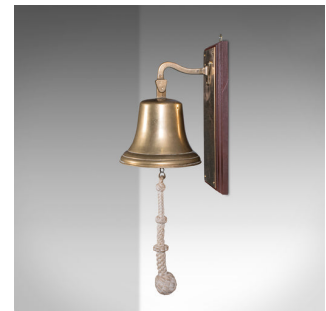


Vintage School Dinner Bell, English, Bronze, Playground Ringer, Mid Century



DESCRIPTION

Our Stock # 26158

This is a vintage school dinner bell. An English, bronze and mahogany mounted playground ringer, dating to the mid 20th century, circa 1960.

- Endearing schoolyard charm to this quality mounted bell
- Displaying a desirable aged patina and in good order
- Superb bronze bell presents deep golden tones
- Set upon a brass plaque mounted to a mahogany plinth
- Clapper strikes prominently within the large bell housing
- Quality, gently aged braided rope articulates the clapper
- Dressed with a mounting loop to the top and bottom for ease of placement

This is a charming vintage school dinner bell, with a bright appearance and robust sound profile. Delivered ready to display.

Search [London Fine for #26158](#) , or scan the QR code for more photos and details

DIMENSIONS

Max Width: 28cm (11")
 Max Depth: 22cm (8.75")
 Max Height: 57cm (22.5")
 Mount Width: 12.5cm (5")
 Mount Height: 36.5cm (14.25")

LIST PRICE

£575.00

