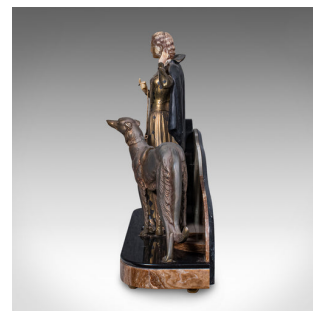
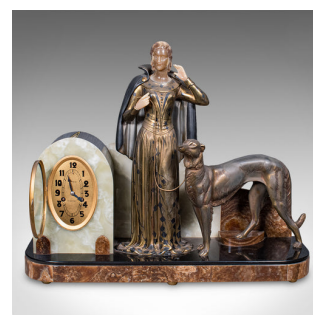


## Large Vintage Figural Mantle Clock, French, Onyx, Pair of Garnitures, Art Deco



### DESCRIPTION

Our Stock # 25023

This is a large vintage figural mantle clock. A French, onyx and spelter timepiece with matched garnitures, dating to the Art Deco period, circa 1930.

- Beguiling Art Deco mantelpiece clock with fine sculptural interest
- Displaying a desirable aged patina and in good original order
- A treat of materials, including onyx, gilt spelter and slate
- Matching pair of garnitures ideal for presenting small flower posies or vines
- Fascinating female and dog sculptures create a striking visual scene
- Dressed in a cloak, the female figure stands next to a slender Borzoi type breed
- Great detail to the braided metal dog leash, attached to the collar
- The whole standing upon an ebonised stage, set atop a polished slate base
- Outstanding weight in the hand at a robust and reassuring XXkg (XX lb)

Search [London Fine for #25023](#) , or scan the QR code for more photos and details

### DIMENSIONS

Clock Width: 61.5cm (24.25")  
 Clock Depth: 22cm (8.75")  
 Clock Height: 49cm (19.25")  
 Garniture Width: 14.5cm (5.75")  
 Garniture Depth: 14.5cm (5.75")  
 Garniture Height: 25cm (9.75")  
 Internal Diameter: 7cm (2.75")

### LIST PRICE

£1,695.00

