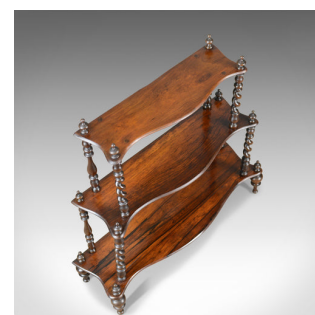


Antique Whatnot, English, Regency, Rosewood, Three Tier, Display Stand
c.1820



DESCRIPTION

Our Stock # 18.5461

This is an antique whatnot, an English, Regency, rosewood, three tier display stand dating the early 19th century circa 1820.

- Attractive, well figured rosewood, graduated shelves
- Serpentine display shelves in waterfall form
- Good colour throughout with a desirable aged patina
- Standing upon turned feet
- Shelves raised on barley twist and baluster turned spindles
- Capped with turned finials, fourth upper shelf historically removed

An appealing example offering a stable display space. Solid joints and construction, delivered waxed, polished and ready for the home.

Search [London Fine for #18.5461](#) , or scan the QR code for more photos and details

DIMENSIONS

- Max Width: 77cm (30.25")
- Max Depth: 23cm (9")
- Max Height: 74cm (29.25")
- Lower Shelf: 29cm (11.5")
- Upper Shelf: 25cm (9.75")

