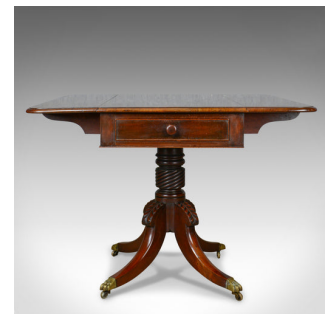


Antique Pembroke Table, Mahogany, English, Regency, Drop Flap, Circa 1820



DESCRIPTION

Our Stock # 18.5682

This is an antique Pembroke table in mahogany. An English, Regency drop flap dining table dating to the early 19th century, circa 1820.

- Fine example in select mahogany with attractive mid-tone palette
- Grain interest with desirable aged patina
- Elegant proportions and easily extended
- Raised on four swept legs with foliate carved, bump knees
- Riding upon the original, solid brass castors in hairy lion paw feet
- Frieze drawer to one end with faux drawer the other
- Dovetailed and cock-beaded, dressed with turned pull
- Extension leaves lift smoothly and rest upon shaped brackets
- Presenting a wonderfully patinated top of useful proportion
- Ideal as a side or games table or for intimate dining

Search [London Fine for #18.5682](#) , or scan the QR code for more photos and details

DIMENSIONS

Max Width: 104cm (41")
 Max Depth: 51.5cm (20.25")
 Max Height: 71.5cm (28.25")
 Extended Depth: 98cm (38.5")

