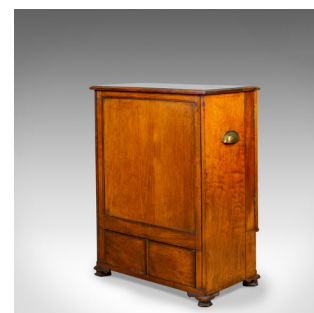


Small, Antique, Wellington Chest, Oak, Fruitwood, Campaign, Specimen c.1890



**DESCRIPTION**

Our Stock # 18.5710

This is a small, antique Wellington chest. An English, oak and fruitwood, campaign chest of drawers dating to the late 19th century, circa 1890.

- Delightful, small Wellington chest
- Rich, warm hues to the oak and fruitwood
- Grain interest, good colour and a desirable aged patina
- Standing upon shaped bracket feet and fitted with cup carry handles
- The top displays well with modest edge moulding
- The suite of four drawers dressed with later brass, batwing handles
- The side panels retain the lower slide bolts with upper lock absent
- A pair of lower, deeper drawers with original carved pulls, lock absent

An antique Wellington chest that's unusual to find this small. Solid joints and construction, delivered waxed, polished and ready for the home.

Search [London Fine for #18.5710](#) , or scan the QR code for more photos and details

**DIMENSIONS**

Max Width: 53.5cm (21")

Max Depth: 30.5cm (12")

Max Height: 69cm (27.25")

