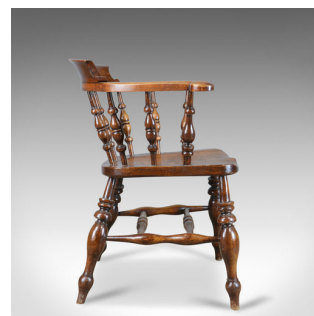


## Antique Bow Chair, Smokers, Captains, English, Victorian, Elm, Windsor c.1870



## DESCRIPTION

Our Stock # 18.5756

This is an antique, bow-back chair, sometimes referred to as a 'Smoker's' or 'Captain's' chair. An English, Victorian elm Windsor piece from the 19th century, circa 1880.

- Attractive deep, rich tones to the elm with a desirable aged patina
- Displaying good grain detail in the saddle seat slab
- Standing upon stout baluster legs united by a double 'H' stretcher
- Ring turned spindles rise obliquely supporting the horseshoe armrest
- Terminating in out-turned scrolled hand grips
- The back crowned with a generous scroll back for added comfort and support
- Stamped with the craftsman's initials 'J.W' to the back of the seat

A very good example offering a comfortable seat. Solid joints and construction, delivered waxed, polished and ready for the home.

Search [London Fine for #18.5756](#), or scan the QR code for more photos and details

## DIMENSIONS

Max Width: 66cm (26")  
Max Depth: 56cm (22")  
Max Height: 78.5cm (31")  
Seat Width: 37cm (14.5")  
Seat Depth: 40.75cm (16")  
Seat Height: 45cm (17.75")

## LIST PRICE

£825.00

