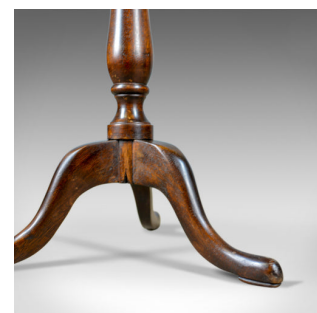
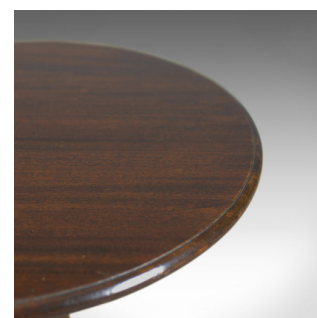


Pair of Antique Tilt-Top Wine Tables, English, Edwardian, Mahogany, Circa 1910



DESCRIPTION

Our Stock # 18.5771

This is a pair of antique tilt-top wine tables. English, Edwardian, mahogany side tables dating to the early 20th century, circa 1910.

- Appealing patina and grain interest in the select mahogany
- Good colour depth shining through the wax polished finish
- Modest proportions ideal as lamp or side tables
- Raised on a stout, baluster turned columns
- Brass catch locking down the tilt top to a steady platform
- A tripod of cabriole legs splay out to spade feet

A good pair of antique tilt-top wine tables with solid joints and construction. Delivered waxed, polished and ready for the home.

Search [London Fine for #18.5771](#) , or scan the QR code for more photos and details

DIMENSIONS

Max Width: 49.25cm (19.5")

Max Depth: 49.25cm (19.5")

Max Height: 60cm (23.5")

