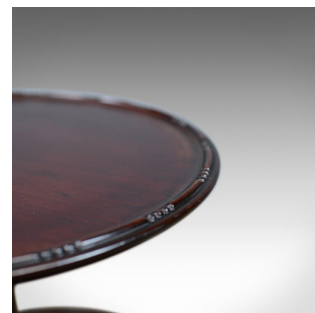
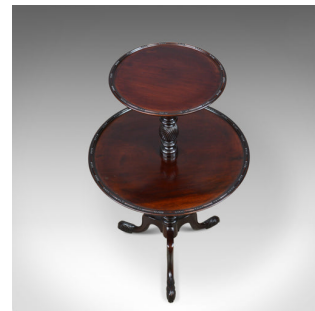


## Antique Dumb Waiter, English, Victorian, Mahogany, Two Tier Table, C19th c.1890



### DESCRIPTION

Our Stock # 11.1658

This is an antique dumb waiter. An English, Victorian, mahogany, waterfall two tier table dating to the late 19th century, circa 1890.

- In select mahogany displaying deep, russet hues
- Lustrous wax polished finish with a desirable aged patina
- In good proportion and ideal to serve high tea or as a side table
- The circular platforms display well encircled with lip moulding
- Raised on beautifully turned stems featuring helically reeded decoration
- The larger, lower tier freely rotates for 360 degree access to cake
- Standing upon a tripod of cabriole legs featuring floral relief carved toes

A fine example of an antique dumb waiter with solid joints and construction. Delivered waxed, polished and ready for the home.

Search [London Fine for #11.1658](#) , or scan the QR code for more photos and details

### DIMENSIONS

Max Width: 52cm (20.5")

Max Depth: 52cm (20.5")

Max Height: 90cm (35.5")

Upper Tier Diameter: 34cm (13.4")

Lower Tier Diameter: 52cm (20.5")

