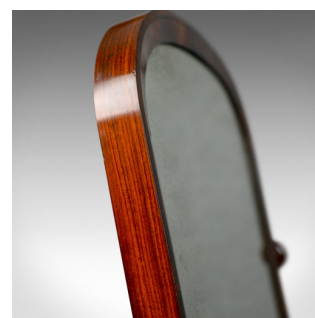
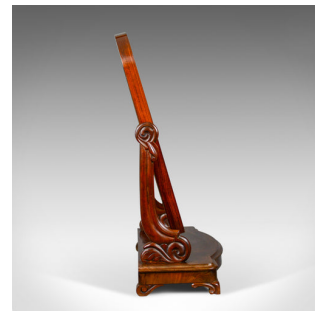


Antique Dressing Table Mirror, Victorian, Vanity, Toilet, Art Nouveau circa 1890



DESCRIPTION

Our Stock #11.1678

This is an antique dressing table mirror, an English, Victorian, vanity toilet mirror displaying Art Nouveau overtones and dating to the late 19th century, circa 1890.

- Pleasing dome topped form in good order throughout
- In select flame mahogany displaying wonderful grain interest
- Good colour in the lustrous wax polished finish
- The original mirror plate displaying desirable light foxing
- The frame showing exceptional grain detail, particularly to the edges
- Mounted in sinuously foliate carved brackets, allowing variable tilt
- The bow fronted platform in good proportion and fine colour
- Finished with a well executed edge moulding and shallow frieze
- Standing upon elegantly formed, scrolled feet all round

A fine example of an antique dressing table mirror. Delivered waxed, polished and ready for the home.

Search [London Fine for #11.1678](#) , or scan the QR code for more photos and details

DIMENSIONS

Max Width: 63cm (24.75")

Max Depth: 24cm (9.5")

Max Height: 80cm (31.5")

