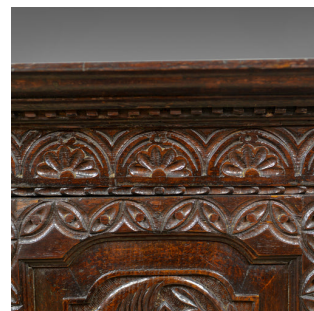


Antique Corner Cabinet, English, Georgian, Carved, Oak, Hanging Cupboard c.1760



DESCRIPTION

Our Stock # 18.5778

This is an antique corner cabinet. An English, Georgian, carved oak, hanging corner cupboard dating to the mid 18th century, circa 1760.

- Crafted in English oak with good colour
- Desirable aged patina with a wax polished finish
- Profusely carved with foliate and floral decoration
- Modest crown pediment featuring dentil mounding
- Demi-lune guilloche to the upper frieze, stiles and lower rail
- Chamfered field panel door dressed with turned pulls
- Inside a suite of three shelves divide the space

A mid-sized antique corner cabinet with solid joints and construction. Delivered waxed, polished and ready for the home.

Search [London Fine for #18.5778](#) , or scan the QR code for more photos and details

DIMENSIONS

Max Width: 74.5cm (29.25")

Max Depth: 47cm (18.5")

Max Height: 93.5cm (36.75")

Max Length along Wall: 53cm (20.75")

