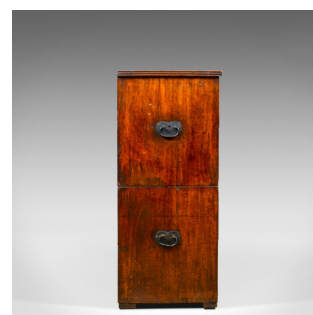


Antique Campaign Chest of Drawers, English, Late Georgian, Walnut, Circa 1780



DESCRIPTION

Our Stock # 18.5658

This is an antique campaign chest of drawers. An English, late Georgian, walnut, narrow chest dating to the late 18th century, circa 1780.

- A charming example of a Georgian campaign chest
- Warm hues to the aged walnut in a wax polished finish
- Grain interest throughout with a desirable aged patina
- Appealing narrow depth at 42cm / 16.5 inches
- A two part chest in good proportion, drawers arranged '2 over 3'
- Drawers dressed with drop handles over pierced brass, 'batwing' back-plates
- Brass inset keyhole linings, locks untested as keys absent
- The original cast iron carry handles to the ends of each section

A super example of an antique campaign chest of drawers. Solid joints and construction, delivered waxed, polished and ready for the home.

Search [London Fine for #18.5658](#), or scan the QR code for more photos and details

DIMENSIONS

Max Width: 92.5cm (36.5")

Max Depth: 42cm (16.5")

Max Height: 97cm (38.25")

