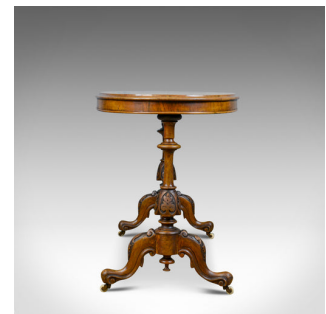


Antique Stretcher Table, Burr Walnut, English, Victorian, Oval, Side, Tea, c1860



DESCRIPTION

Our Stock # 18.5806

This is an antique stretcher table in burr walnut. An English, Victorian, ovular, side or tea table dating to the mid 19th century, circa 1860.

- Well figured burr walnut top with moulded edge detail
- Beautifully quarter veneered decoration
- Lustrous shine in the wax polished finish
- Shallow frieze in good proportion
- Well executed ring turned legs with carved cap detail
- United by ring turned stretcher with central ball
- Four cabriole legs feature carved foliate decoration to the knee
- Stout scrolled toes over white ceramic castors
- Lower inverted finials completing the decoration

A good example of an antique stretcher table. Solid joints and construction, delivered waxed, polished and ready for the home.

Search [London Fine for #18.5806](#) , or scan the QR code for more photos and details

DIMENSIONS

Max Width: 106cm (41.75")

Max Depth: 61cm (24")

Max Height: 73.5cm (29")

