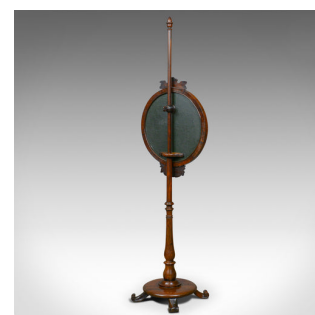
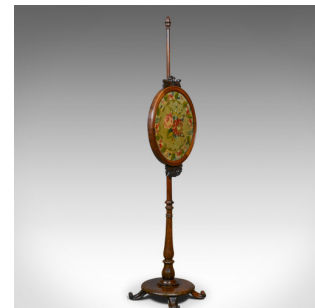


Antique, Pole Screen, Regency, Fire Screen, Needlepoint Tapestry Circa 1820



DESCRIPTION

Our Stock # 18.5662

This is an antique pole screen, an English, Regency fire screen with needlepoint tapestry panel dating to the early 19th century, circa 1815.

- Raised on a fine rosewood stand with good colour and grain interest
- Adjustable, circular needlepoint tapestry panel
- Well executed floral spray framed in a foliate border
- Carved appliqué to the crown and foot of the panel
- Attractive, baluster turned pole rising to an acorn finial
- Anchored in a turned, circular platform base
- Standing upon four scrolled feet featuring etch carved detail
- The adjustable screen locked with a delightful wooden thumb screw block

A fine example of an antique pole screen. Solid and stable, delivered waxed, polished and ready for the home.

Search [London Fine for #18.5662](#) , or scan the QR code for more photos and details

DIMENSIONS

Max Width: 42cm (16.5")

Max Depth: 33cm (13")

Max Height: 152.5cm (60")

Screen Diameter: 42cm (16.5")

