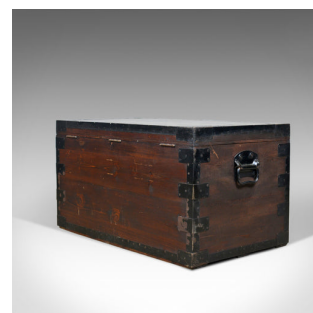


Antique Steamer Trunk, Marine, English, Travel, Ship's Chest, Metal Lined, c1880



DESCRIPTION

Our Stock # 18.5818

This is an antique steamer trunk of marine interest, an English travel or ship's chest in stained pine and metal lined, dating to the late 19th century, circa 1880.

- Robustly constructed in dark stained pine
- Grain detail and a desirable aged patina
- Metal bound for strength and to protect against knocks
- Brass keyhole escutcheons, locks untested as key absent
- Dressed with heavy duty, metal handles to either end
- The stout lid raises on quality hinges and holds on stays
- The zinc lined interior offering voluminous storage

An interesting antique steamer trunk. Solid joints and construction, delivered waxed, polished and ready for the home.

Search [London Fine for #18.5818](#) , or scan the QR code for more photos and details

DIMENSIONS

Max Width: 91.5cm (36")

Max Depth: 53cm (20.75")

Max Height: 49.5cm (19.5")

