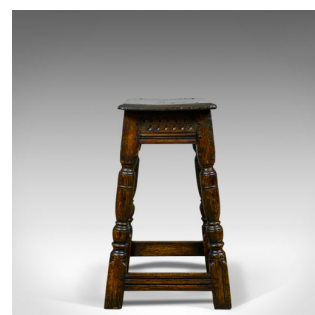


## Antique Joint Stool, English, Oak, Victorian, Jacobean Revival, Circa 1900



### DESCRIPTION

Our Stock # 18.5847

This is an antique joint stool, an English, oak, Victorian Jacobean revival stool dating to the turn of the 20th century, circa 1900.

- Single plank top in English oak with moulded edge detail
- Wisps of medullary rays and grain interest with good colour
- Raised on stout, ring turned baluster legs
- Generous box stretcher and guilloche carved seat rail
- Pegged joints in a very stable construction

A charming stool or side table with solid joints and construction. Delivered waxed, polished and ready for the home.

Search [London Fine for #18.5847](#) , or scan the QR code for more photos and details

### DIMENSIONS

Max Width: 38cm (15")  
 Max Depth: 34cm (13.5")  
 Max Height: 55cm (21.75")  
 Seat Width: 47cm (18.5")  
 Seat Depth: 26cm (10.25")  
 Seat Height: 55cm (21.75")

