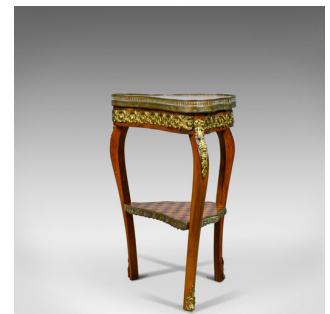


French, Antique, Side Table, Two Tier, Birch, Ormolu, Marble Top, circa 1900



DESCRIPTION

Our Stock # 18.5802

This is a French antique side table. A two tier, beech and ormolu, marble top tripod table dating to the turn of the 20th century, circa 1900.

- An appealing French tripod table
- The shaped blush marble top displays well
- The select mahogany with good colour and finish
- Legs slightly canted but offer up a flat, stable surface
- Shaped top enclosed with a pierced metal gallery
- The apron richly decorated with an applied gilt metal guilloché
- Raised on three cabriole legs with ormolu mounts to the knees and feet
 - Lower display tier with walnut and birch chequer-board finish doubling as a stretcher

An attractive French, antique side table. Solid joints and construction delivered waxed, polished and ready for the home.

Search [London Fine for #18.5802](#) , or scan the QR code for more photos and details

DIMENSIONS

Max Width: 44cm (17.25")

Max Depth: 32cm (12.5")

Max Height: 53.5cm (21")

