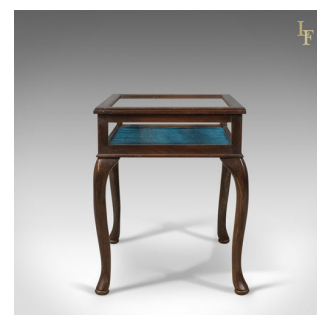


Bijouterie Glazed Display Table, Mahogany, Late C20th Specimen Cabinet



DESCRIPTION

Our Stock # 10.1746

This is a bijouterie, glazed, display table in mahogany and dating to the late 20th century.

- Dark waxed finish to the solid mahogany case
- Glazed all round for excellent light distribution
- Lid lifts on solid brass hinges with the benefit of a brass stay to hold it up
- Interior fitted with deep, luxurious blue velvet lining
- Lower edge moulding to case
- Stout cabriole legs to pad feet

A very stable display case. Solid joints and construction, delivered waxed, polished and ready for the home.

Search [London Fine](#) for #10.1746 , or scan the QR code for more photos and details

DIMENSIONS

Max Width: 62cm (24.5")
 Max Depth: 49cm (19.25")
 Max Height: 61cm (24")
 Internal Display Area:
 Max Width: 54cm (21.25")
 Max Depth: 40cm (15.75")
 Max Height: 12cm (4.75")

