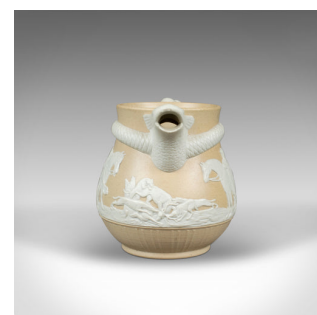


Vintage Sprig-Moulded Stoneware Jug, Decorative, Jasperware Taste, Late C20th



DESCRIPTION

Our Stock # 18.5717

This is a vintage sprig-moulded stoneware jug. A decorative piece in the Jasperware taste, a serpent mounted jug dating to the late 20th century.

- Attractive small stoneware jug
- Cream sprig mouldings on a pale butterscotch ground
- Head shaped spout with entwined serpentine handle
- Applied scenes of horses, figures and trees
- Ribbed base section
- '15' maker's mark to the base

Free from damage and ready for display in the home.

Search [London Fine for #18.5717](#), or scan the QR code for more photos and details

DIMENSIONS

Max Width: 20.5cm (8")
Max Depth: 12cm (4.75")
Max Height: 14cm (5.5")

