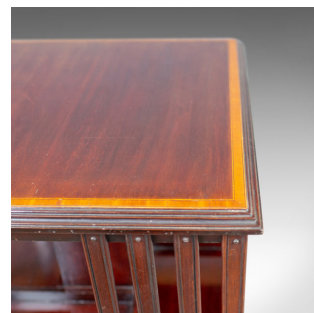
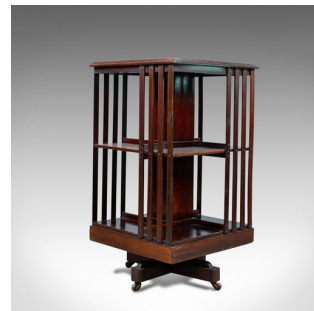


Antique Revolving Bookcase, English, Edwardian, Walnut, Bookshelf, Circa 1910



DESCRIPTION

Our Stock # 18.5724

This is an antique revolving bookcase. An English, Edwardian, walnut bookshelf dating to the early 20th century, circa 1910.

- Walnut with satinwood cross-banding, evocative of the period
- Tabletop displaying good grain detail and a moulded edge profile
- Slatted side panels to two-tier bookshelves
- Raised on a four-footed stand
- Riding upon smooth running castors
- Rotates effortlessly for easy browsing

A period antique revolving bookcase offering ample bookshelf space and a useful table top. Solid joints and construction, delivered waxed, polished and ready for the home.

Search [London Fine for #18.5724](#) , or scan the QR code for more photos and details

DIMENSIONS

Max Width: 47cm (18.5")

Max Depth: 47cm (18.5")

Max Height: 86cm (33.75")

