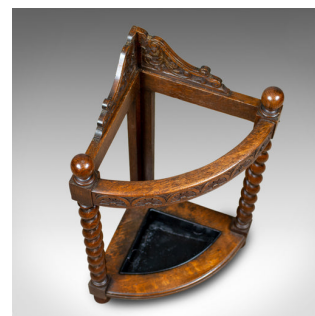


Antique Corner Stick Stand, Edwardian, Umbrella, Oak, Early C20th, Circa 1910



DESCRIPTION

Our Stock # 18.5875

This is an antique corner stick stand. An Edwardian stick or umbrella stand in oak and dating to the early 20th century, circa 1910.

- Formed in English oak with deep rugged tones
- Jointed construction with a wax polished finish
- Attractive colour with a desirable aged patina
- Attractive, opposing pair of barley twist legs
- Capped with tactile, ball finials
- The forward quadrant rail decorated with foliate carved demi-lunes
- To the rear a pair of carved, scrolled brackets
- The lower platform displays grain interest
- A removable, tin drip tray features a pair of folding handles
- Raised on bun feet to the fore

Search [London Fine for #18.5875](#), or scan the QR code for more photos and details

DIMENSIONS

Max Width: 51cm (20")

Max Depth: 35.5cm (14")

Max Height: 75cm (29.5")

