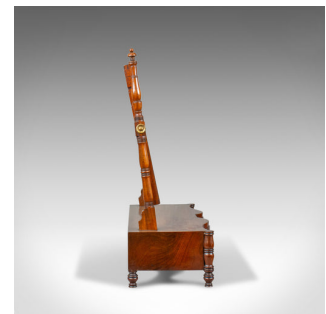


Antique Dressing Table Mirror, Mahogany, Vanity, Platform, Toilet, Circa 1890



DESCRIPTION

Our Stock # 18.5877

This is an antique dressing table mirror in flame mahogany. An English, Victorian, vanity, platform, toilet mirror dating to circa 1890.

- A mid-sized, adjustable mirror in fine order throughout
- Flame mahogany displaying grain interest and a desirable aged patina
- Good consistent colour in a waxed polish finish
- Attractive, serpentine front with a central carved rosette
- A pair of useful, hand-dovetailed drawers
- Dressed with loop handles over pressed brass back-plates
- Baluster turned pillars supporting an adjustable mirror plate
- Brass adjustment handles at the mid-point
- Raised on ring turned legs all round

A classic antique dressing table toilet mirror. Solid joints and construction, delivered waxed, polished and ready for the home.

Search [London Fine for #18.5877](#) , or scan the QR code for more photos and details

DIMENSIONS

Max Width: 60.5cm (23.75")

Max Depth: 22.5cm (8.75")

Max Height: 64cm (25.25")

