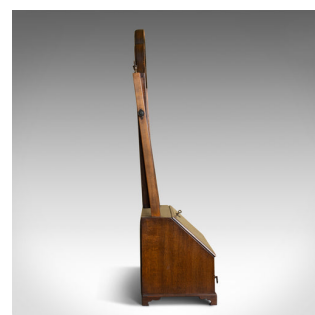


## Antique Bureau Mirror, English, Georgian Revival, Mahogany, Toilet Circa 1910



### DESCRIPTION

Our Stock # 18.5906

This is an antique bureau mirror, an English, Georgian revival, mahogany, toilet or vanity mirror dating to the Edwardian era circa 1910.

- A delightful dressing table vanity mirror
- The mahogany frame displaying good colour throughout
- The original hand bevelled mirror plate displaying desirable foxing
- Adjustable angle swinging from square section risers capped with turned finials
- The fall-front base in good proportion raised on squat bracket feet
- A locking fall opens onto lopers to reveal a suite of six drawers
- The outer two shaped and all dressed with brass drop handles
- Beneath, a broader storage drawer dressed with drop handles

A super example of an antique bureau mirror presented in original condition. Delivered waxed, polished and ready for the home.

Search [London Fine for #18.5906](#) , or scan the QR code for more photos and details

### DIMENSIONS

Max Width: 47cm (18.5")

Max Depth: 22cm (8.75")

Max Height: 83cm (32.75")

