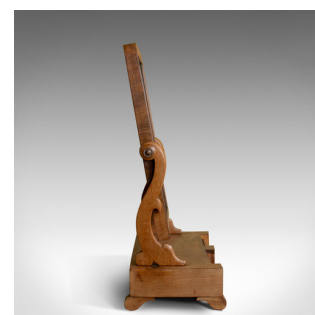


Antique Dressing Table Mirror, Victorian, Mahogany, Adjustable, Swing Circa 1870



DESCRIPTION

Our Stock # 18.5911

This is an antique dressing table mirror, an English, Victorian mahogany, adjustable swing mirror dating to circa 1870.

- Of fine quality in mahogany with grain interest throughout
- Good consistent colour and a desirable aged patina
- Well figured frame to original mirror plate - in good order
- Swan neck pillars with turned knobs to secure plate angle
- Pair of shaped frieze drawers offering storage space
- Raised on reeded and scrolled feet

A fine example of an antique dressing table mirror. Solid joints and construction. Delivered waxed, polished and ready for the home.

Search [London Fine for #18.5911](#) , or scan the QR code for more photos and details

DIMENSIONS

Max Width: 49.5cm (19.5")

Max Depth: 24.5cm (9.75")

Max Height: 66cm (26")

