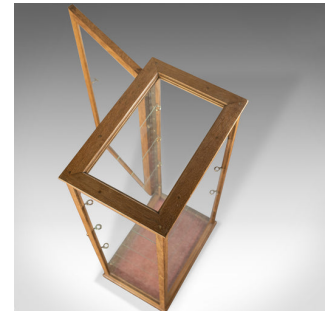




Antique Display Cabinet, Glass Shelves, English, Late 19th Century, Oak, C.1900



DESCRIPTION

Our Stock # 18.5919

This is an antique counter display cabinet with four glass shelves. An English, late 19th century oak cabinet, circa 1900.

- Crafted from oak and displaying plentiful grain interest
- A desirable aged patina present throughout
- Plate glass in good display condition
- A modest crown moulding mirrored in the plinth base
- Full-length rear opening door provides access to the display space
- A charming twist-catch brass latch secures the door
- Four removable glass shelves allows for a variable configuration
- The base of the cabinet finished in a mulberry velvet cloth

This is a pleasing antique display cabinet of solid joints and construction, delivered waxed, polished and ready for the home.

Search [London Fine for #18.5919](#), or scan the QR code for more photos and details

DIMENSIONS

Max Width: 37cm (14.5")

Max Depth: 26.5cm (10.5")

Max Height: 76cm (30")

