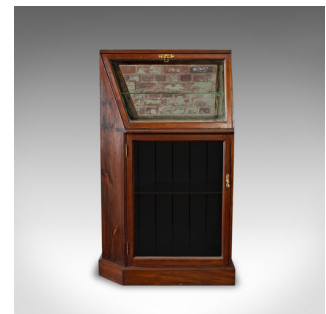


Antique Display Cabinet, English, Edwardian, Mahogany, Early 20th Century, C1910



**DESCRIPTION**

Our Stock # 18.6001

This is an antique display cabinet. An English, Edwardian corner show case, crafted from rich, dark mahogany dating to the early 20th century, circa 1910.

- Cabinet displays a good, consistent colour throughout
- Dark stained mahogany and glass panes show a fine, aged patina
- Wax polished finish and plentiful grain interest
- Upper cabinet door hinges downwards to reveal a mirrored display case
- A removable, shaped glass shelf resides across the centreline.
- An eye-catching brass link supports the cabinet door when opened
- The larger, lower cabinet door is closed by an original, brass twist catch
- A removable wooden shelf for configurable display space
- Raised upon a continuous plinth base

An appealing period display cabinet with solid joints and construction. Delivered waxed, polished and ready for the home.

Search [London Fine for #18.6001](#) , or scan the QR code for more photos and details

**DIMENSIONS**

Max Width: 71cm (28")

Max Depth: 42cm (16.5")

Max Height: 126cm (49.5")

