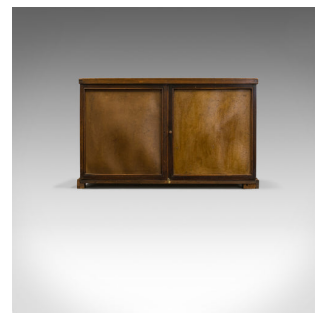
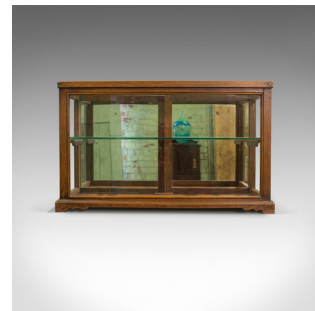


Antique Display Cabinet, Shop Fitting, English, Victorian, Oak Circa 1900



DESCRIPTION

Our Stock # 18.5918

This is an antique display cabinet or shop fitting with a central glass shelf and mirror back. An English, Victorian oak cabinet from the late 19th century, circa 1900.

- Crafted from oak and showing fine grain interest
- Displays a desirable aged patina throughout
- The plate glass is in good original condition
- Glass shelf is removable allowing full height display if required
- A small brass twist catch to the rear doors
- The plinth base displays a modest, valanced skirt

This antique glass cabinet is of solid joints and construction, delivered waxed, polished and ready for the home.

Search [London Fine for #18.5918](#) , or scan the QR code for more photos and details

DIMENSIONS

Max Width: 64.5cm (25.5")

Max Depth: 33cm (13")

Max Height: 40cm (15.75")

