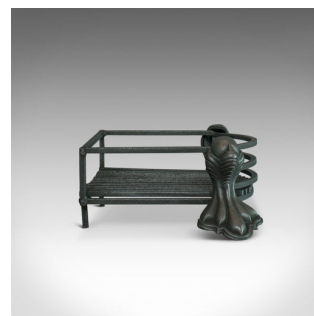
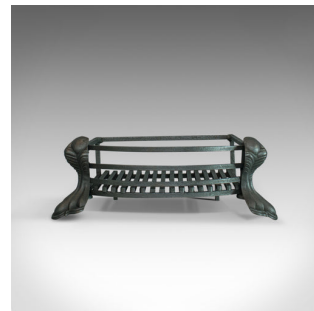


Antique Fire Basket, English, Iron, Fireplace Grate, Circa 1900



DESCRIPTION

Our Stock # 11.3010

This is an antique fire basket. An English, iron, fireplace grate dating to the late 19th century, circa 1900.

- Free-standing basket of quality craftsmanship
- Hand-forged iron displays a desirable aged patina
- Finished in traditional graphite
- Attractive form with bow front and twin rails
- Standing over cast front corner support legs
- Suitable for use with all fuel types

This is a charming antique fire basket of quality construction and attractive form. It will be delivered polished and ready to grace any fireside location within the home.

Search [London Fine for #11.3010](#) , or scan the QR code for more photos and details

DIMENSIONS

Max Width: 60cm (23.5")

Max Depth: 40cm (15.75")

Max Height: 22cm (8.75")

