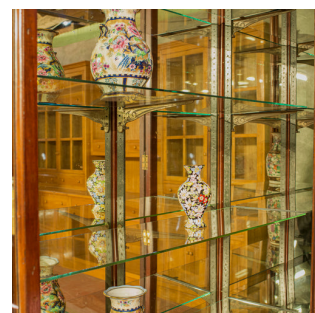
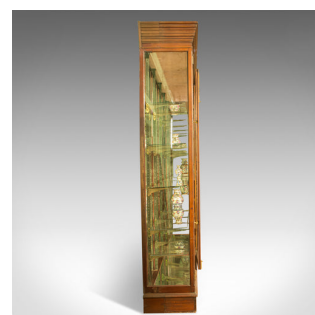


Very Large, Antique Shop Display Cabinet, Victorian, Mirror-Back Cabinet, c.1900



DESCRIPTION

Our Stock # 18.6017

This is a very large, antique shop display cabinet. An English, Victorian mirror-back cabinet by renowned Bath shop fitter J Foster and dating to the turn of the 20th century, circa 1900.

- Magnificent scale at just under 4M (nearly 13 feet) wide
- Beautifully crafted in select mahogany with a wax polished finish
- Displaying grain interest and a desirable aged patina
- Original mirror back and base displaying desirable light foxing
- In good proportion with a large crown moulding and continuous plinth base
- A suite of three sets of double doors to access the huge display space within
- Each set closing with a pair of J Foster patented, solid brass twist catches
- Inside a full complement of five, glass, adjustable shelves per section

A phenomenal shop display cabinet. Solid joints and construction, delivered waxed, polished and ready for the home or commercial setting. Disassembles for shipping and installation.

Search [London Fine for #18.6017](#), or scan the QR code for more photos and details

DIMENSIONS

Max Width: 392cm (154.25")

Max Depth: 52cm (20.5")

Max Height: 275.5cm (108.5")

