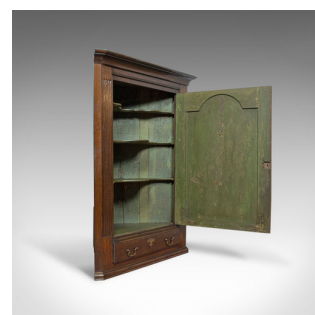
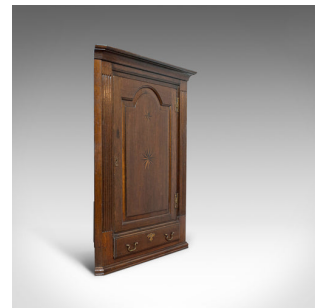


Antique Corner Cabinet, English, Georgian, Oak, Hanging, Cupboard, Circa 1780



**DESCRIPTION**

Our Stock # 11.2122

This is an antique corner cabinet. An English, Georgian, oak, hanging wall cupboard dating to the late 18th century, circa 1780.

- Select oak with rich hues and in desirable aged patina
- Good consistent colour throughout and fine grain interest
- Generously sized, with wonderful proportion and ideal for display or storage
- Lightly canted corners and classic fluted detailing with attractive mouldings to the crown and foot
  - Field panel door, with arch centre decorated with twin star-burst in ebonised and bleached inlay
- Door features a brass lock escutcheon, lock and key absent
- The original painted interior features a trio of serpentine fronted shelves
- Beneath, a full-width drawer dressed with swan neck handles and a bat-wing, solid brass lock escutcheon

A delightful antique corner cabinet. Solid joints and construction supplied with fittings for easy wall mounting. Delivered waxed, polished and ready for the home.

**DIMENSIONS**

Max Width: 93cm (36.5")  
 Max Depth: 60cm (23.5")  
 Max Height: 100cm (39.25")

**LIST PRICE**

£790.00



Search [London Fine](#) for #11.2122, or scan the QR code for more photos and details

+44 (0) 207 1833 511

London Fine Ltd  
 The Antique Village  
 The Old Whiteways Cider Factory  
 Hele, Devon, EX5 4PW

sales@londonfine.co.uk  
 E. & O. E.