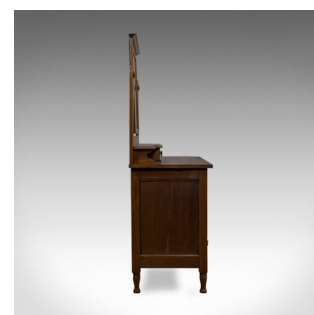


Antique Dressing Table, Ray and Miles, Edwardian, Oak, Vanity Chest, Circa 1910



DESCRIPTION

Our Stock # 11.2737

This is an antique dressing table by Ray and Miles. An English, Edwardian, oak vanity mirror and chest of drawers, dating to the early 20th century, circa 1910.

- Crafted by renowned firm, Ray and Miles of Liverpool and displaying a desirable aged patina
- Select oak showing a consistent rich colour and fine grain interest
- Original bevel-edged mirror plate displays coveted light foxing
- Classic appeal and attractive proportions from the Edwardian period
- Bevel-edge tilting mirror above an upper vanity shelf
- Over a pair of vanity drawers with oak linings and strong dovetail joints
- Lower chest of four drawers offering excellent storage capacity
- Original brass plate, drop handle fittings to each drawer
- Raised upon turned legs at each corner

This is a delightful antique dressing table from Ray & Miles of Liverpool. Solid joints and construction, delivered waxed, polished and ready for the home.

Search [London Fine for #11.2737](#), or scan the QR code for more photos and details

DIMENSIONS

Max Width: 107cm (42.25")

Max Depth: 49cm (19.25")

Max Height: 156cm (61.5")

