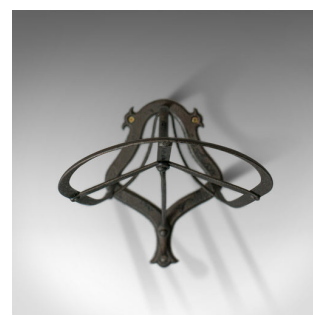


Antique Saddle Rack, English, Victorian, Wall Mounted, Forged Iron, Circa 1900



DESCRIPTION

Our Stock # 18.6027

This is an antique saddle rack. An English, Victorian wall mounted, forged iron rack dating to the turn of the 20th century, circa 1900.

- Forged in iron with graphite finish for durable equestrian needs
- Good consistent colour with a desirable patina
- Ample bracing offering stability for saddlery
- Screw holes ready for mounting in place
- A sinuous hook sits underneath for hanging a crop
- The rack's form and purpose is well suited to various outdoor pursuits

This charming antique saddle trestle is of solid joints and construction, delivered waxed, polished and ready for mounting.

Search [London Fine for #18.6027](#) , or scan the QR code for more photos and details

DIMENSIONS

Max Width: 25cm (9.75")

Max Depth: 50cm (19.75")

Max Height: 28cm (11")

Mounting Plate Width: 20cm (7.75")

