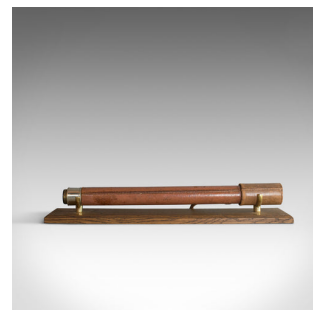


Antique Telescope, H Hughes and Son, London, Officer of the Watch, Early C20th



DESCRIPTION

Our Stock # 18.5081

This is an antique telescope, a single draw refractor for terrestrial or astronomical use.

An English, 'Officer of the Watch' telescope dating to the early 20th century.

Perfect for bird watching, landscape appreciation, wildlife, or maritime observation.

Equally suitable for observing the night sky.

- Presenting a clear, sharp optical performance
- Parallel, leather-clad, primary barrel in good order
- Nickel-plated draw tube and sunshade
- Withdraws with a smooth action, easy to focus
-
- 30mm (1.25") objective lens
- Presents a good, sharp and bright image
- Engraved 'H. Hughes and Son Ltd, London, No. 8687, Made in Great Britain'
- Complete with leather lens cap and sliding dust cover

Search [London Fine for #18.5081](#) , or scan the QR code for more photos and details

DIMENSIONS

Closed Length: 46cm (18")

Max Drawn Length: 60.5cm (23.75")

Objective Glass Diameter: 30mm (1.25")

