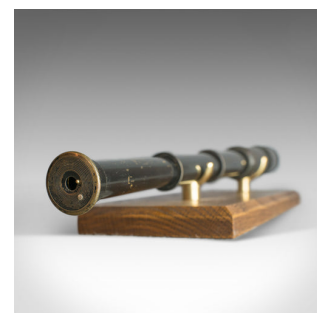
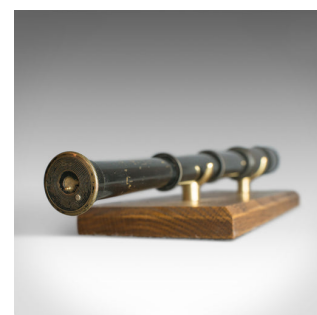


## Antique Pocket Telescope, Three Draw, Refractor, English, Edwardian, Circa 1910



### DESCRIPTION

Our Stock # 18.5851

This is an antique pocket telescope, a three draw refractor for terrestrial or astronomical use. An English Edwardian scope dating to the early 20th century circa 1910.

Perfect for bird watching, landscape appreciation, wildlife, or maritime observation. Equally suitable for observing the night sky.

- Presenting a clear, sharp optical performance
- Supplied with a London Fine oak and brass 'Captain's Stand' for display
- 25mm, 1" achromatic objective lens, lens cap and sunshade
- Parallel, stitched half leather primary barrel
- Offering a smooth draw action and easy focus
- Swivel dust cover to flared eyecup

An historic, period antique pocket telescope, as good to use today as it was a hundred years ago.

Search [London Fine for #18.5851](#) , or scan the QR code for more photos and details

### DIMENSIONS

Fully Drawn: 42.5cm (16.75")

Closed: 16cm (6.25")

Objective Glass Diameter: 25mm (1")

