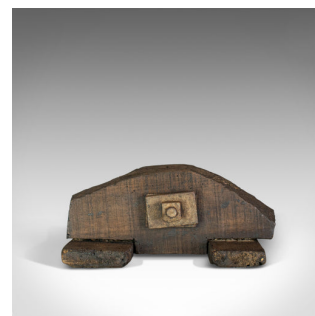


Antique Rope Pulley, English, Victorian, Rustic, Sleeper, Pine, Circa 1900



DESCRIPTION

Our Stock # 18.6029

This is an antique rope pulley. An English, Victorian rustic sleeper pulley in pine and iron, dating to the late 19th century, circa 1900.

- Displaying a desirable, aged patina and copious grain interest
- Pulley of useful width at 13cm (5") wide
- Sturdy bolt and railway sleeper form offers dependability
- Showing character with aged wormholes
- Great as a doorstop

This antique rope pulley is of architectural interest. Solid joints and construction, delivered waxed, polished and ready for the home.

Search [London Fine for #18.6029](#), or scan the QR code for more photos and details

DIMENSIONS

Max Width: 40cm (15.75")

Max Depth: 33cm (13")

Max Height: 14.5cm (5.75")

