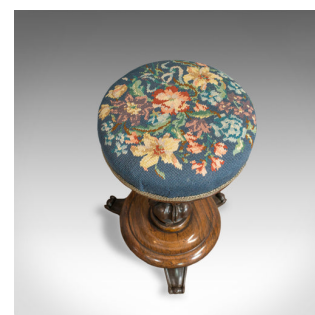
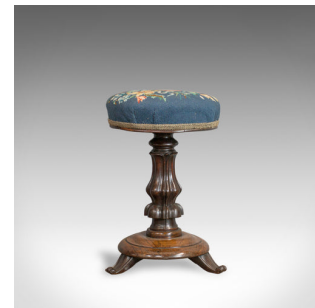


Antique Piano Stool, Rosewood, Music, Regency, Adjustable, Needlepoint, c.1830



DESCRIPTION

Our Stock # 18.5464

This is an antique piano stool. An English, rosewood, height adjustable music stool with needlepoint tapestry seat pad, dating to the Regency period of the 19th century, circa 1830.

- Rich, dark hues throughout and a desirable aged patina
- Traditionally stuffed seat pad finished with a brocade trim
- Upholstered in a needlepoint tapestry cloth in good order
- Featuring floral sprays on a blue ground
- Quality threaded adjustable riser, easy to adjust height
- Raised on a tripod of swept legs terminating in scrolled toes

This is a lovely antique Regency piano stool. Solid joints and construction, delivered waxed, polished and ready for recitals.

Search [London Fine for #18.5464](#) , or scan the QR code for more photos and details

DIMENSIONS

Max Width: 32.5cm (12.75")
 Max Depth: 32.5cm (12.75")
 Min Height: 48cm (19.25")
 Max Height: 58cm (22.75")
 Cushion Diameter: 31.5cm (12.5")

