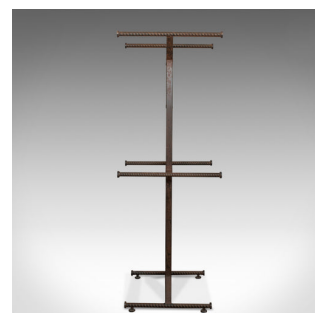
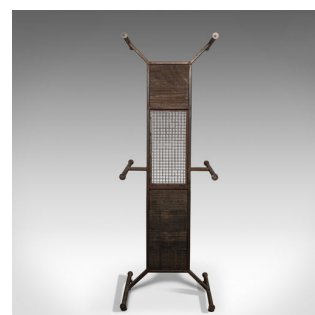
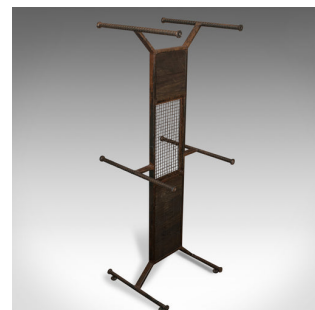




## Tall Vintage Display Stand, English, Steel, Oak, Fashion, Retail, Industrial



### DESCRIPTION

Our Stock # 18.6050

This is a 7' 2" tall vintage display stand. An English, steel and oak fashion retail stand in industrial taste and dating to the 20th century.

- Impressive proportions and in strong industrial taste
- Displays dark hues throughout and a desirable aged patina
- A suite of hanging rails arranged two over two
- Central mesh detail compliments the overall aesthetic
- Raised upon a pair of stout feet with four risers

This is a tall, vintage display stand well suited to commercial settings. Solid joints and construction, delivered waxed, polished and ready for display.

Search [London Fine for #18.6050](#), or scan the QR code for more photos and details

### DIMENSIONS

Max Width: 79.5cm (31.25")

Max Depth: 75cm (29.5")

Max Height: 219cm (86.25")

