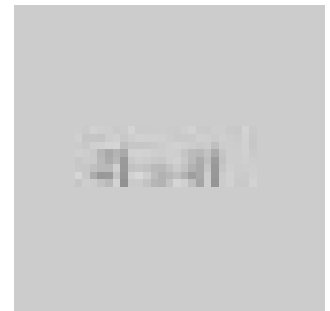
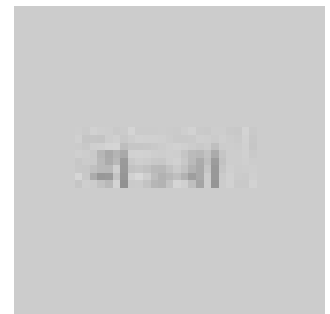


Antique Lord Bury 3 Draw Telescope by J H Steward London, Victorian c.1870



DESCRIPTION

Stock # LFA1076 This is an early, and fine, example of the famous Lord Bury telescope made by J H Steward, London in the latter part of the 19th century. In very good cosmetic and optical condition, the makers name is engraved both on the first draw tube and also on a brass plaque on the leather clad main barrel. The 40mm objective lens delivers a clear sharp image which is well focused, and all lenses are free from damage. It features a panoramic tube with 3 graduation lines indicating ascending magnification levels of 25x, 30x & 35x described in the catalogue at the time as; "will show a flagstaff at 22 miles, and show the time by a church clock at 6 miles". The 3 draw tubes have a firm, smooth draw action, retaining the majority of their original anti glare coating, generally in good order save for the odd, minor ding. The leather covered main barrel's stitching is in good order.

Search [London Fine](#) for #LFA-1076 or scan the QR code for more photos and details

DIMENSIONS

Closed Length: 26cm (10.25")

Drawn Length: 84cm (33")

Objective Lens Diameter: 40mm (1.5") Find out more about J.H.Steward Ltd [Here](#)

