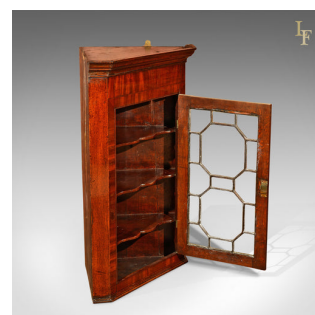


## Georgian Glazed Antique Corner Cabinet, c.1800



## DESCRIPTION

Our Stock # 10.1229

This is an antique, Georgian, hanging antique corner cabinet dating to c.1800.

This mid-sized cabinet is constructed in oak with canted corners and offers added interest with the mahogany veneer framing around the door panel. The fifteen pane astragal glazed door features the original glass and a working lock and key with brass escutcheon.

Visible through the door, the triple, serpentine fronted shelves provide plenty of storage or display space within this attractive cupboard that would make a fine addition to any room.

A fine hanging cupboard complete with wall fixings. Delivered waxed, polished and ready for the home.

Search [London Fine for #10.1229](#), or scan the QR code for more photos and details

## DIMENSIONS

Max Width: 74cm (29.25")

Max Depth: 45cm (17.75")

Max Height: 108cm (42.5")

