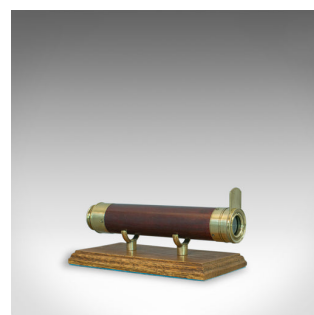
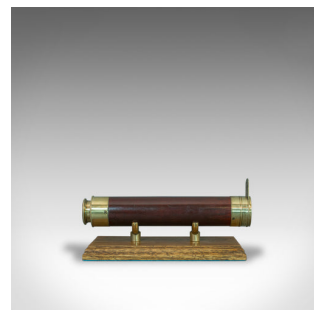


Antique Telescope, 2 Draw Refractor, Terrestrial, Astronomical, English, C.1810



DESCRIPTION

Our Stock # 18.6059

This is an antique telescope, a two draw refractor for terrestrial or astronomical use. An English, late Georgian piece dating to the early 19th century, circa 1810.

Perfect for bird watching, landscape appreciation, wildlife stalking, or maritime observation. Equally suitable for observing the night sky.

- Good optics presenting a clear, sharp performance
- Parallel, fruitwood primary barrel in good order
- Draw tubes in good order with smooth action
- 25mm (1") achromatic objective with sliding dust cover
- Flared eyecup with sliding dust cover
- Supplied with a London Fine oak and brass 'Captain's Stand' for display

A historic, period piece as good to use today as it was two hundred years ago.

Search [London Fine for #18.6059](#) , or scan the QR code for more photos and details

DIMENSIONS

Closed Length: 21.5cm (8.5")

Fully Drawn Length: 50.5cm (20")

Objective Glass Diameter: 25mm (1")

