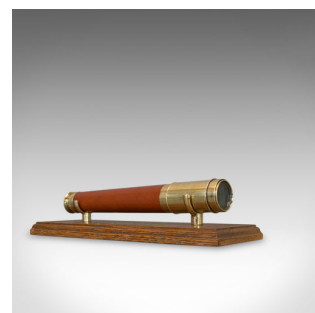
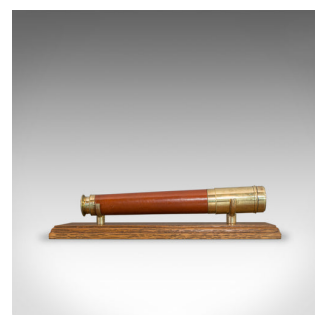
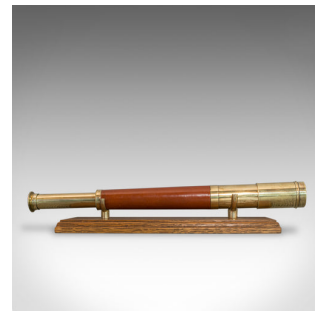


## Antique Telescope, English, Single Draw, Terrestrial, Astronomical, Circa 1790



### DESCRIPTION

Our Stock # 18.6058

This is an antique telescope, an English, Georgian, single draw refractor for terrestrial or astronomical use dating to circa 1790.

Perfect for bird watching, landscape appreciation, wildlife stalking, or maritime observation. Equally suitable for observing the night sky.

- Presenting a clear, sharp optical performance
- Tapered, wooden primary barrel
- Single, brass draw tube in good order
- 35mm (1.5") objective lens with dust cap
- Extending brass sunshade
- Flared eyecup with swivel dust cover

A fine antique telescope supplied with a London Fine oak and brass 'Captain's Stand' for display. A historic, period piece as good to use today as it was two hundred years ago.

Search [London Fine for #18.6058](#) , or scan the QR code for more photos and details

### DIMENSIONS

Closed Length: 25cm (9.75")

Fully Drawn Length: 39cm (15.25")

Objective Glass Diameter: 35mm (1.5")

